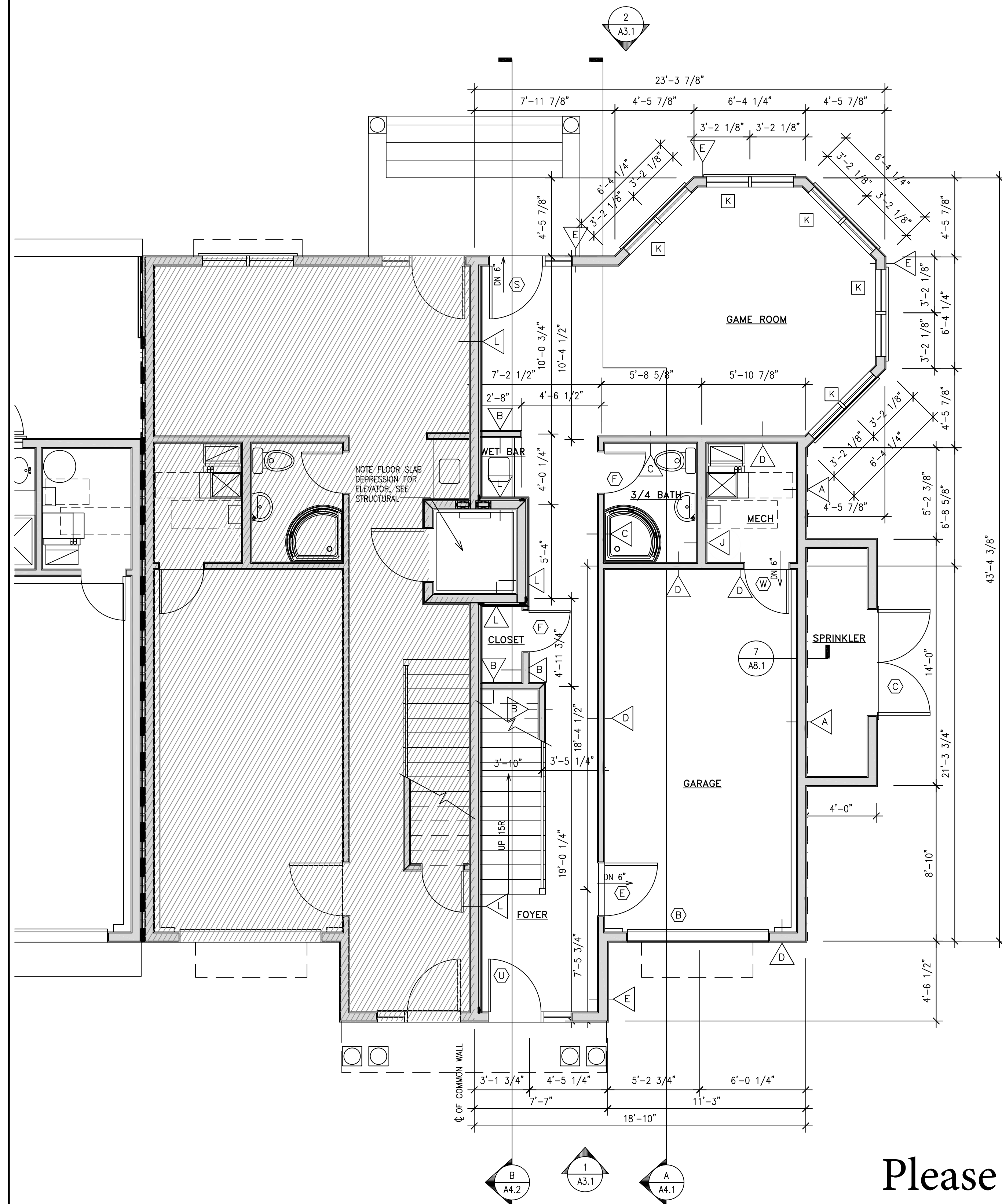
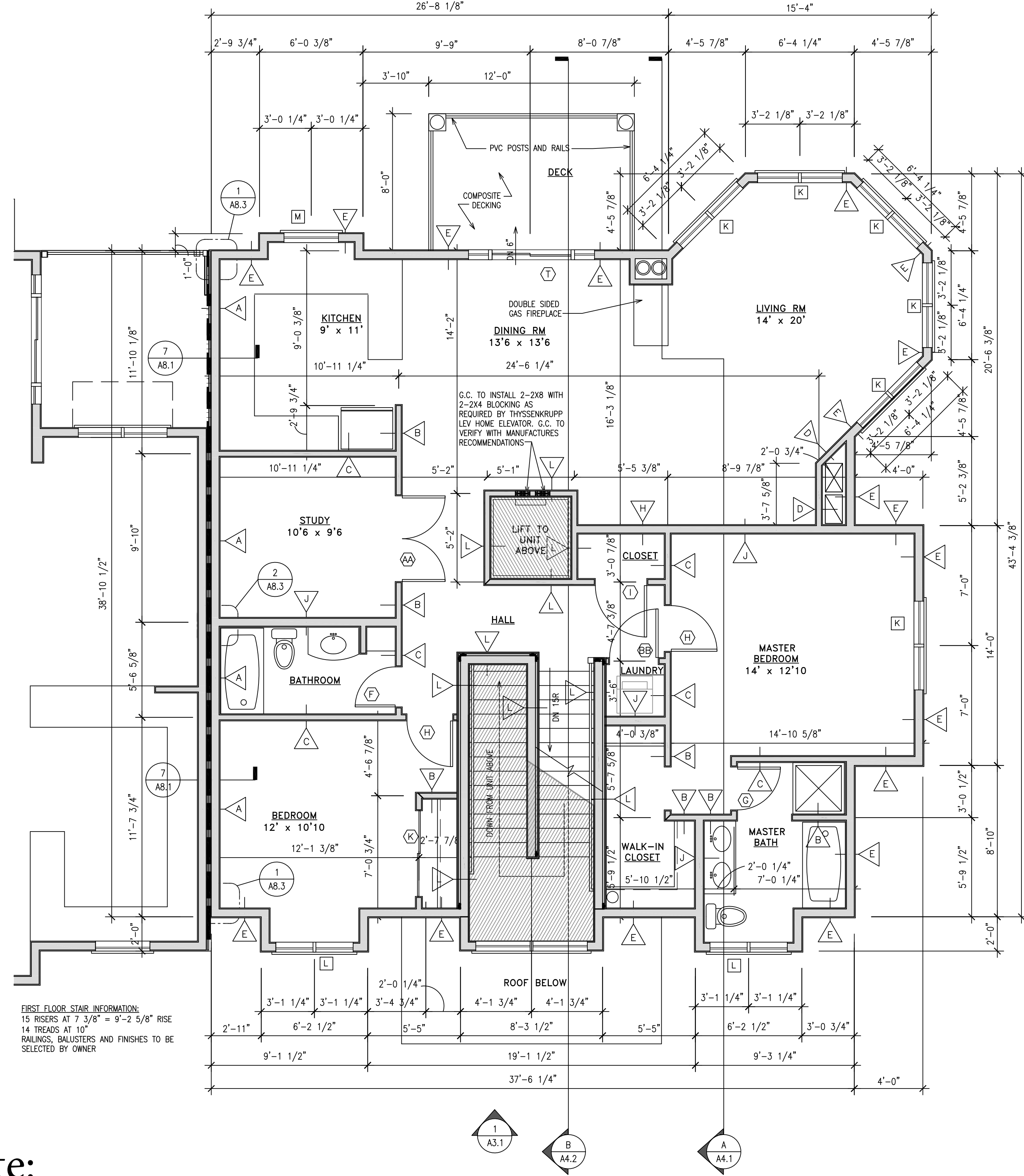


Unit 306

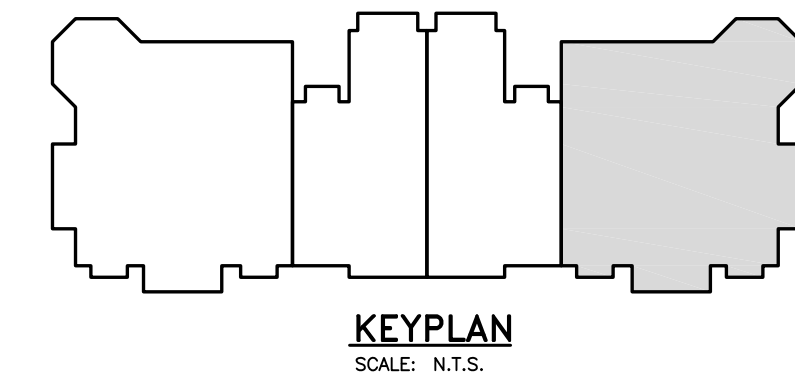


A2.1 GROUND FLOOR PLAN - UNIT #4
SCALE: 1/4" = 1'-0"

Please Note:
The study area walls were removed to enlarge the kitchen area.
(See floor Plan)

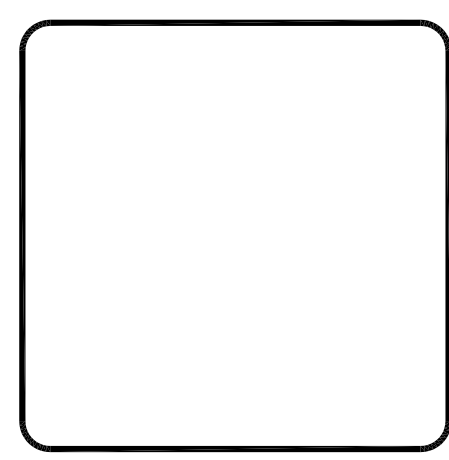


A2.1 FIRST FLOOR PLAN - UNIT #4
SCALE: 1/4" = 1'-0"



NO.	REVISIONS	DATE
1	STAIR CONFIGURATION & SOUND ATTENUATION	6/21/13

CRAMER & LEVINE
ARCHITECTS
154 MASS MAIN STREET
TBL (609) 230-2488



PROJECT:
Building 'A'
Lighthouse Point Condominiums
Schooner Way
Plymouth, Massachusetts

DWG. TITLE:
BLDG 'A' - UNIT 4
GROUND FLOOR AND
FIRST FLOOR PLANS

DRAWN	PO
APPR.	
DATE	5/21/13
SCALE	AS SHOWN
CAD FILE	H:\M\W\GROUP\MARBORSHORES
JOB NO.	13-034
SHEET	

A2.1

Copyright 2013 by Cramer Levine & Company, Architects, P.C. The architectural plans, drawings, designs, specifications and other arrangements on this sheet are and shall remain the property of Cramer Levine & Company, Architects, P.C. No part thereof shall be copied, disclosed to others, or used in connection with any work or project, other than the specified project for which they have been prepared and designed, without the express knowledge and written consent of Cramer Levine & Company, Architects, P.C.