

Copyright 2015 by Cramer Levine & Company, Architects, P.C. The architectural plans, drawings, designs, specifications and other arrangements on this sheet are and shall remain the property of Cramer Levine & Company, Architects, P.C. No part thereof shall be copied, disclosed to others, or used in connection with any work or project, other than the specified project for which they have been prepared and developed, without the express knowledge and written consent of Cramer Levine & Company, Architects, P.C.

NO.	REVISIONS	DATE
1	FOR PANGILO REALTY APPROVAL	5/20/16
2	REMOVED PANGILO	6/6/16
3	PER PANGILO	6/22/16
4	ISSUED FOR CONSTRUCTION	8/24/16
5	ISSUED FOR CONSTRUCTION	11/8/16
6	REVISIONS	12/14/16

CRAMER ■ LEVINE
& C O M P A N Y
134 EAST MAIN STREET NORTON, MA 02766
TEL (508) 230-2466 FAX (774) 265-1811

PROJECT:
Building 'F'
Lighthouse Point Condominiums
Schooner Way
Plymouth, Massachusetts

DWG. TITLE:
BLDG 'F' - UNIT TYPE 2
GROUND FLOOR AND
FIRST FLOOR PLANS

DRAWN
APP'R
DATE 10/27/15
SCALE AS SHOWN
JOB NO. 15-034
SHEET

A2.1

NO.	REVISIONS	DATE
1	FOR PANGLO REALTY APPROVAL	5/20/16
2	REVISED PER D'ANGELO	6/6/16
3	REVISED PER D'ANGELO	6/22/16
4	ISSUED FOR CONSTRUCTION	8/24/16
5	ISSUED FOR CONSTRUCTION	11/8/16
6	REVISIONS	12/14/16

CRAMER ■ LEVINE
 & C O M P A N Y

134 EAST MAIN STREET NORTON, MA 02766
 TEL (508) 230-2466 FAX (774) 265-1811

PROJECT:

Building 'F'
 Lighthouse Point Condominiums
 Schooner Way
 Plymouth, Massachusetts

DWG. TITLE:

BUILDING 'F' – UNIT 2
SECOND FLOOR AND
ROOF PLAN

DRAWN

APPR.

DATE 10/27/15

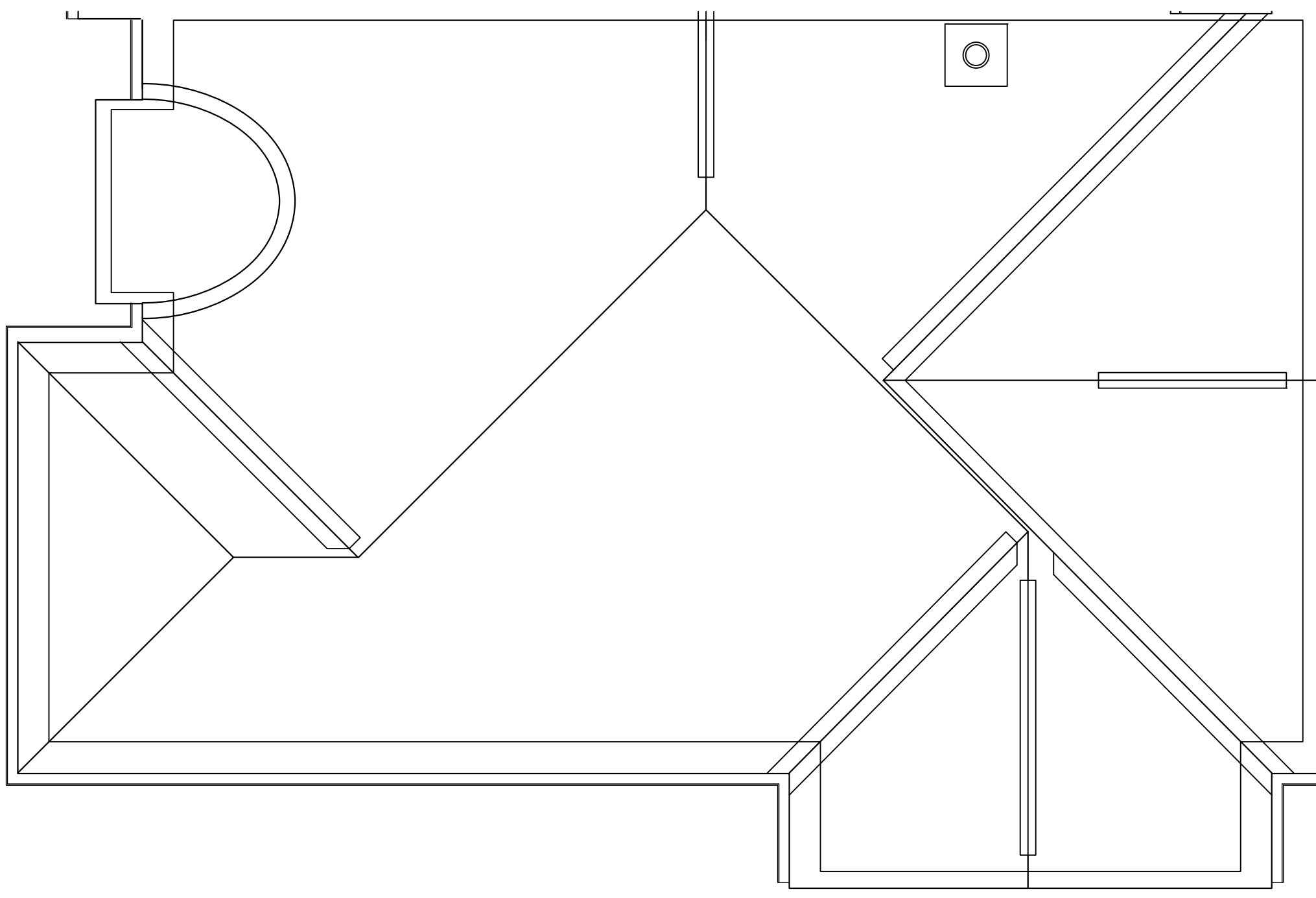
SCALE AS SHOWN

CAD FILE S:\Projects\Building F\Working\Building F.dwg

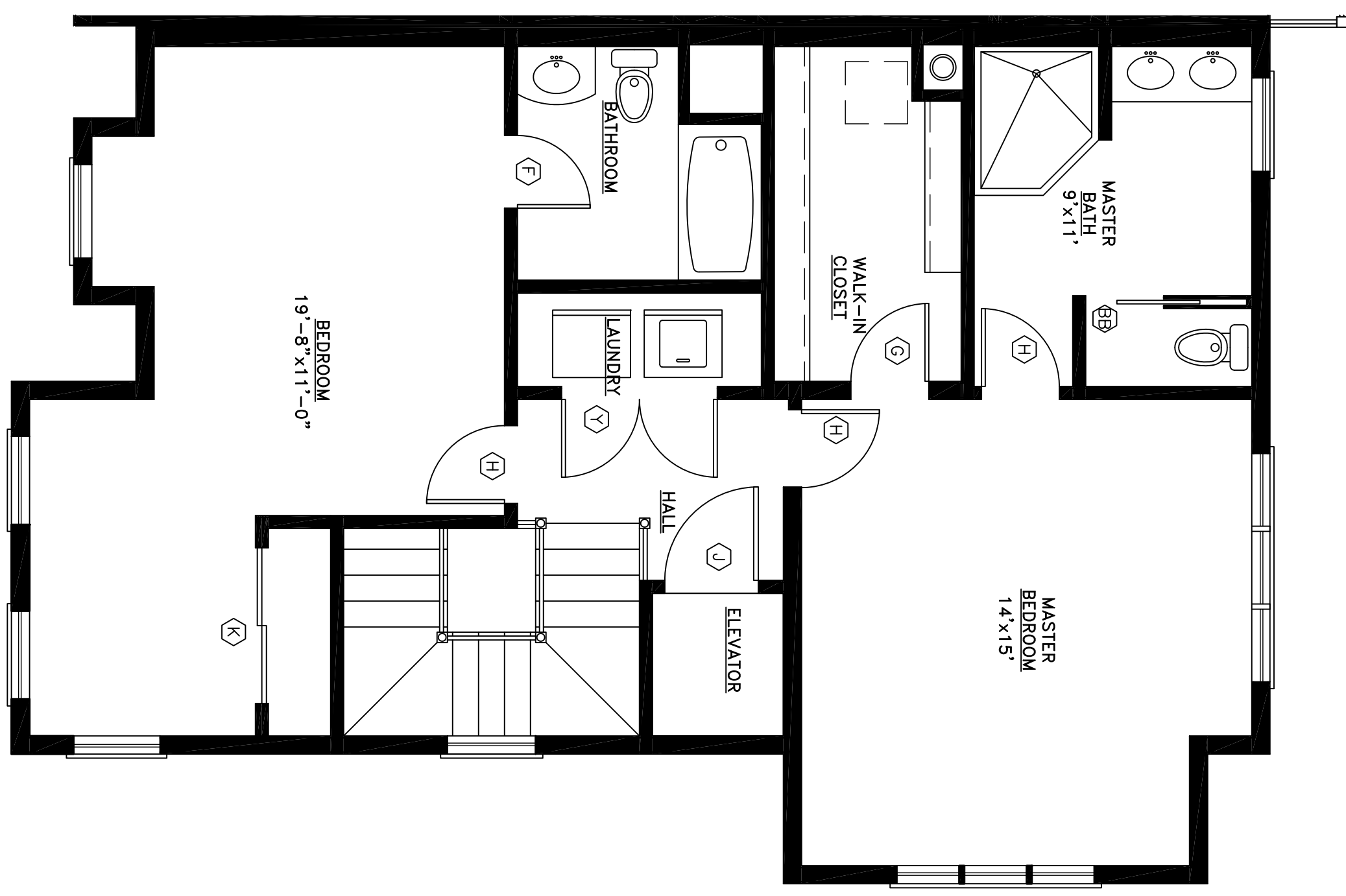
JOB NO. 15-034

SHEET

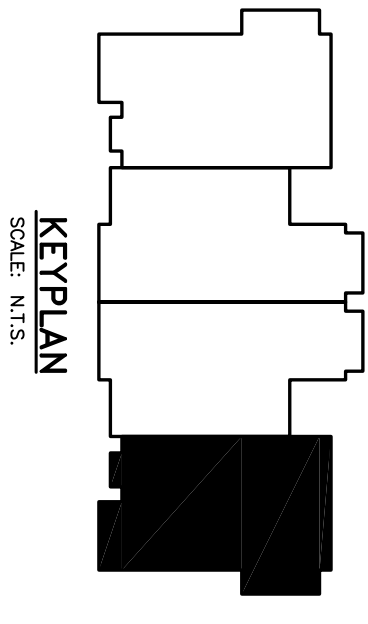
A2.2



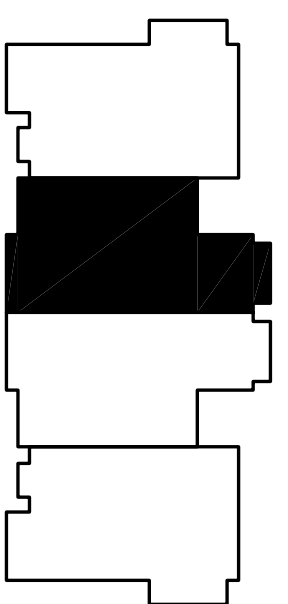
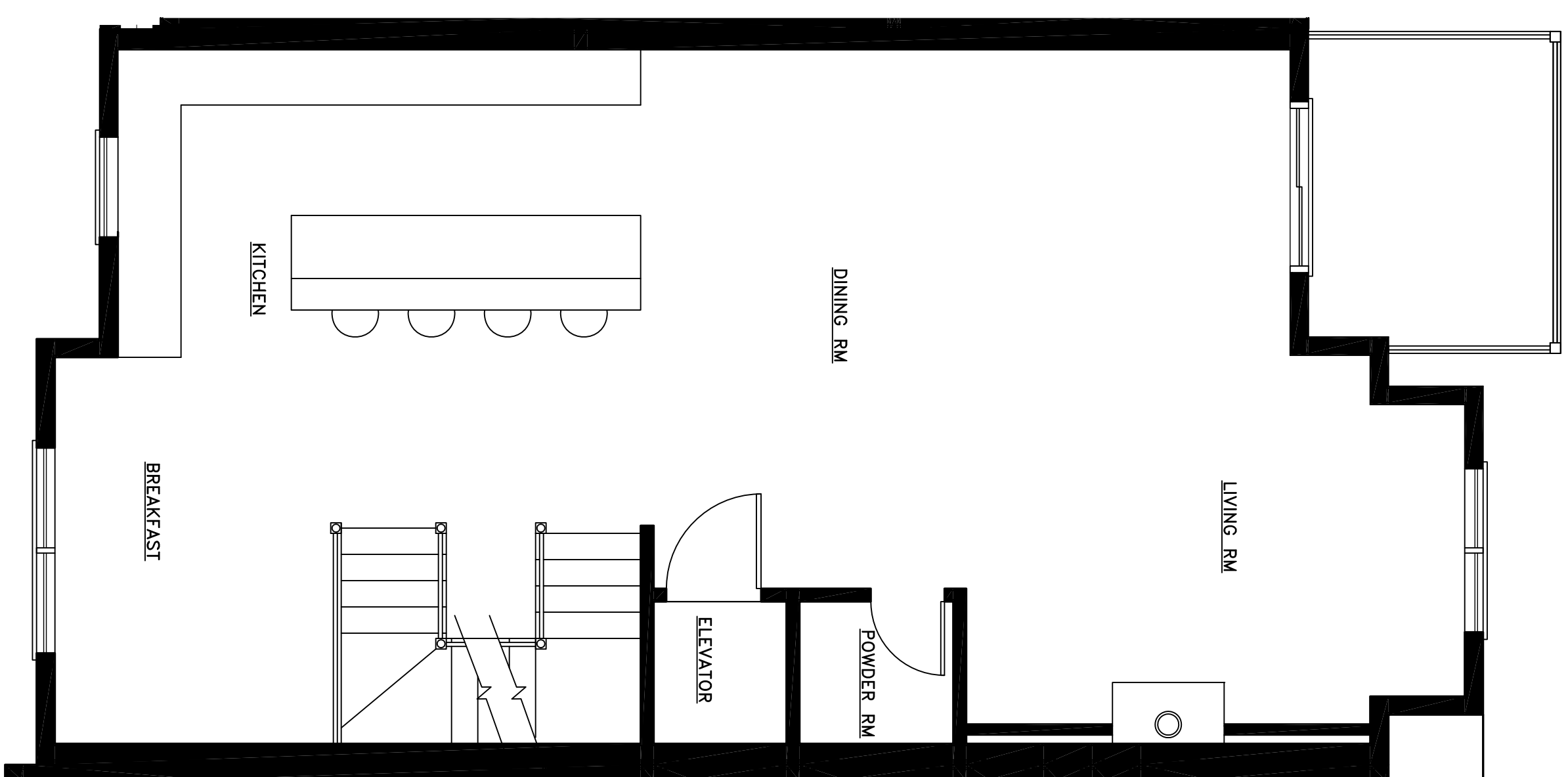
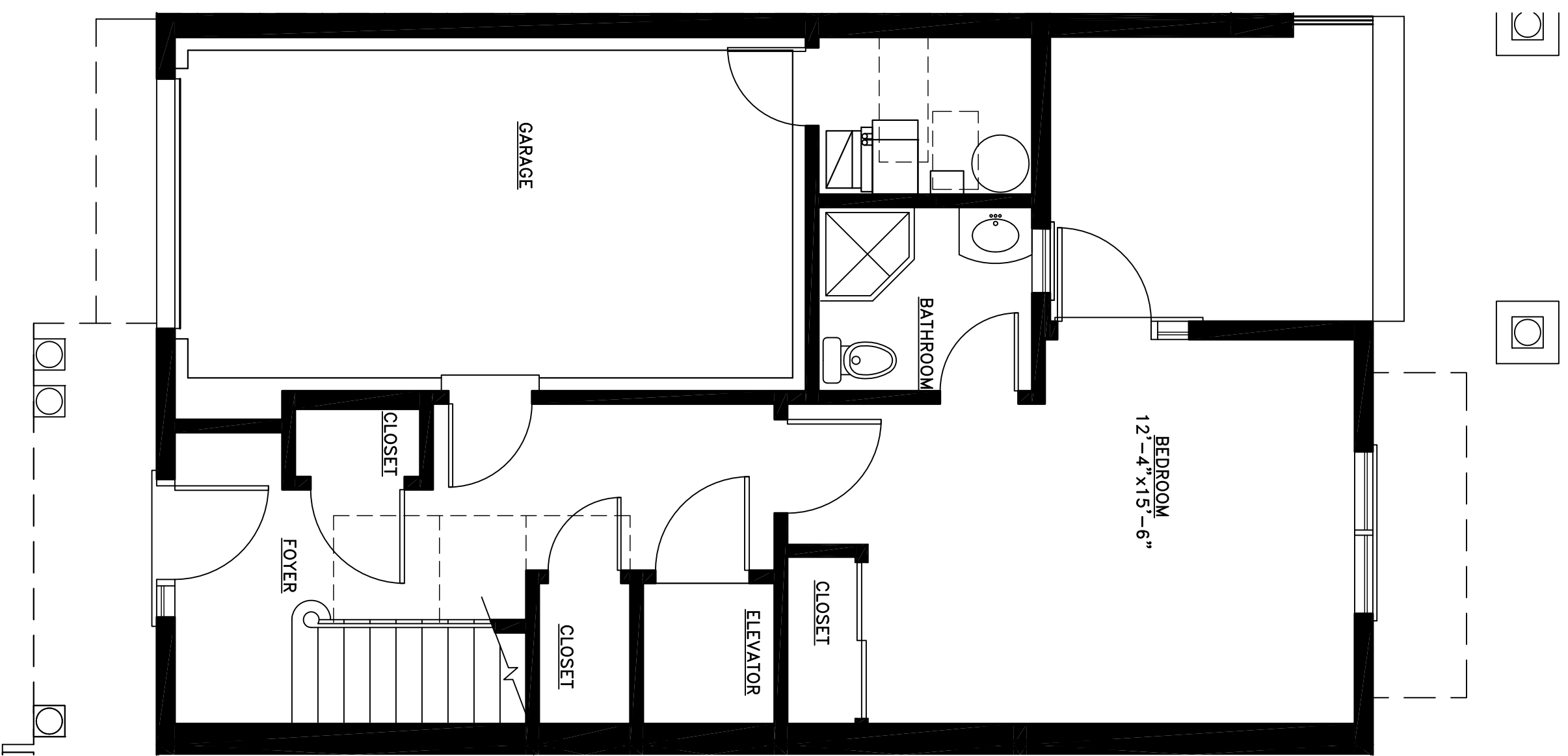
2 ROOF PLAN – UNIT #804
 SCALE: 1/4" = 1'-0"
 SQUARE FOOTAGE
 TOTAL LIVING = 2422 SQ.FT.



1 SECOND FLOOR PLAN – UNIT #804
 SCALE: 1/4" = 1'-0"
 SQUARE FOOTAGE
 SECOND FLOOR = 957 SQ.FT.



Copyright 2015 by Cramer Levine & Company, Architects, P.C. The architectural plans, drawings, designs, specifications and other arrangements on this sheet are and shall remain the property of Cramer Levine & Company, Architects, P.C. No part thereof shall be copied, disclosed to others, or used in connection with any work or project, other than the specified project for which they have been prepared and developed, without the express knowledge and written consent of Cramer Levine & Company, Architects, P.C.



Copyright 2015 by Cramer Levine & Company, Architects, P.C. The architectural plans, drawings, designs, specifications and other arrangements on this sheet are and shall remain the property of Cramer Levine & Company, Architects, P.C. No part thereof shall be copied, disclosed to others, or used in connection with any work or project, other than the specified project for which they have been prepared and developed, without the express knowledge and written consent of Cramer Levine & Company, Architects, P.C.

NO.	REVISIONS	DATE
1	FOR PANGILO REALTY APPROVAL	5/20/16
2	REVISIONS PER PANGILO	6/6/16
3	REVISIONS PER PANGILO	6/22/16
4	ISSUED FOR CONSTRUCTION	8/24/16
5	ISSUED FOR CONSTRUCTION	11/8/16
6	REVISIONS	12/14/16

CRAMER ■ LEVINE
& C O M P A N Y
134 EAST MAIN STREET NORTON, MA 02766
TEL (508) 230-2466 FAX (774) 265-1811

PROJECT:
Building 'F'
Lighthouse Point Condominiums
Schooner Way
Plymouth, Massachusetts

DWG. TITLE:
BLDG 'F' - UNIT 1R
GROUND FLOOR AND
FIRST FLOOR PLANS

DRAWN
APPR.
DATE 10/27/15
SCALE AS SHOWN
JOB NO. 15-034
SHEET

A2.3

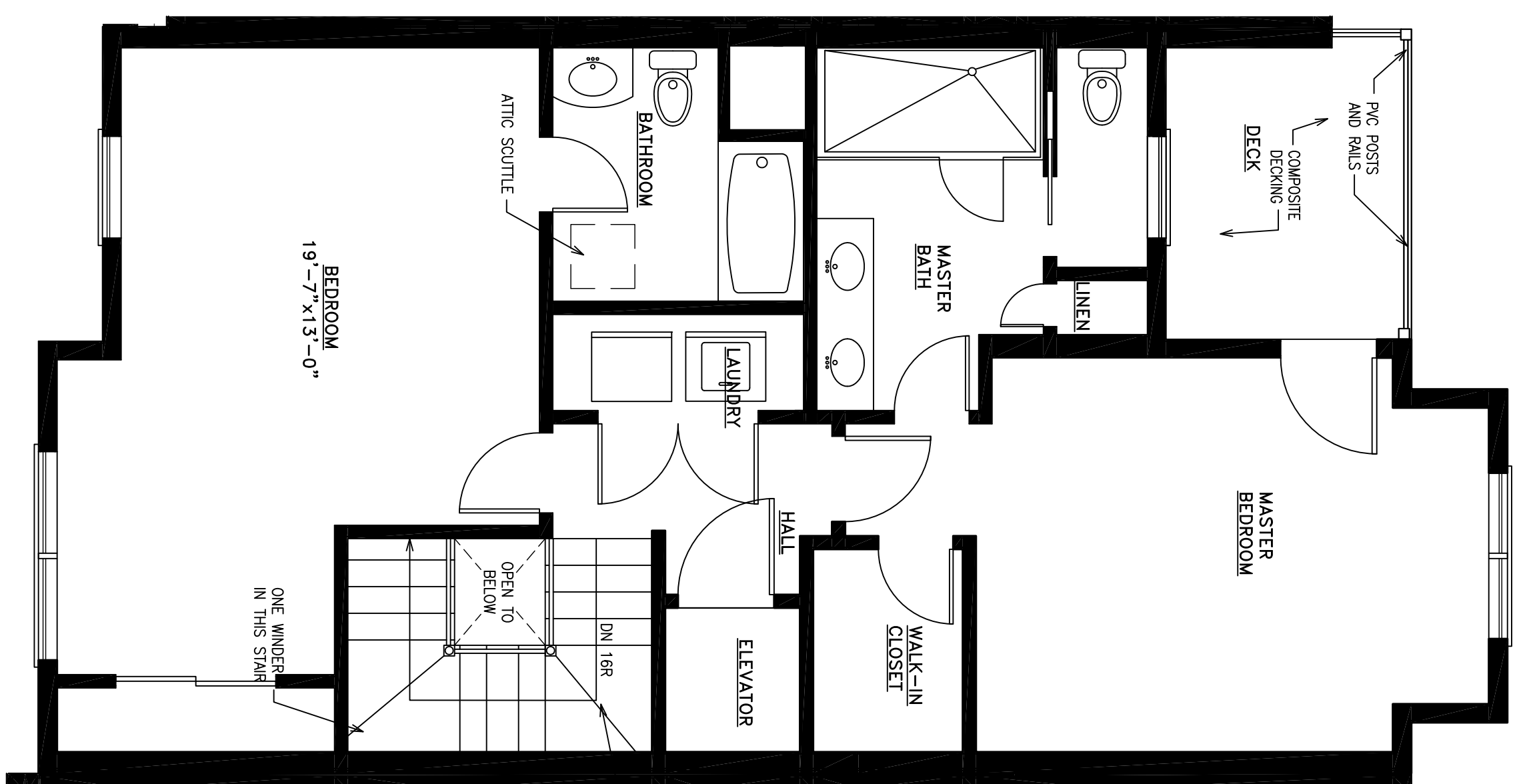
NO.	REVISIONS	DATE
1	FOR PANGLO REALTY APPROVAL	5/20/16
2	REVISED PER D'ANGELO	6/6/16
3	REVISED PER D'ANGELO	6/22/16
4	ISSUED FOR CONSTRUCTION	8/24/16
5	ISSUED FOR CONSTRUCTION	11/8/16
6	REVISIONS	12/14/16

CRAMER ■ LEVINE
 & C O M P A N Y
 134 EAST MAIN STREET NORTON, MA 02766
 TEL (508) 230-2466 FAX (774) 265-1811

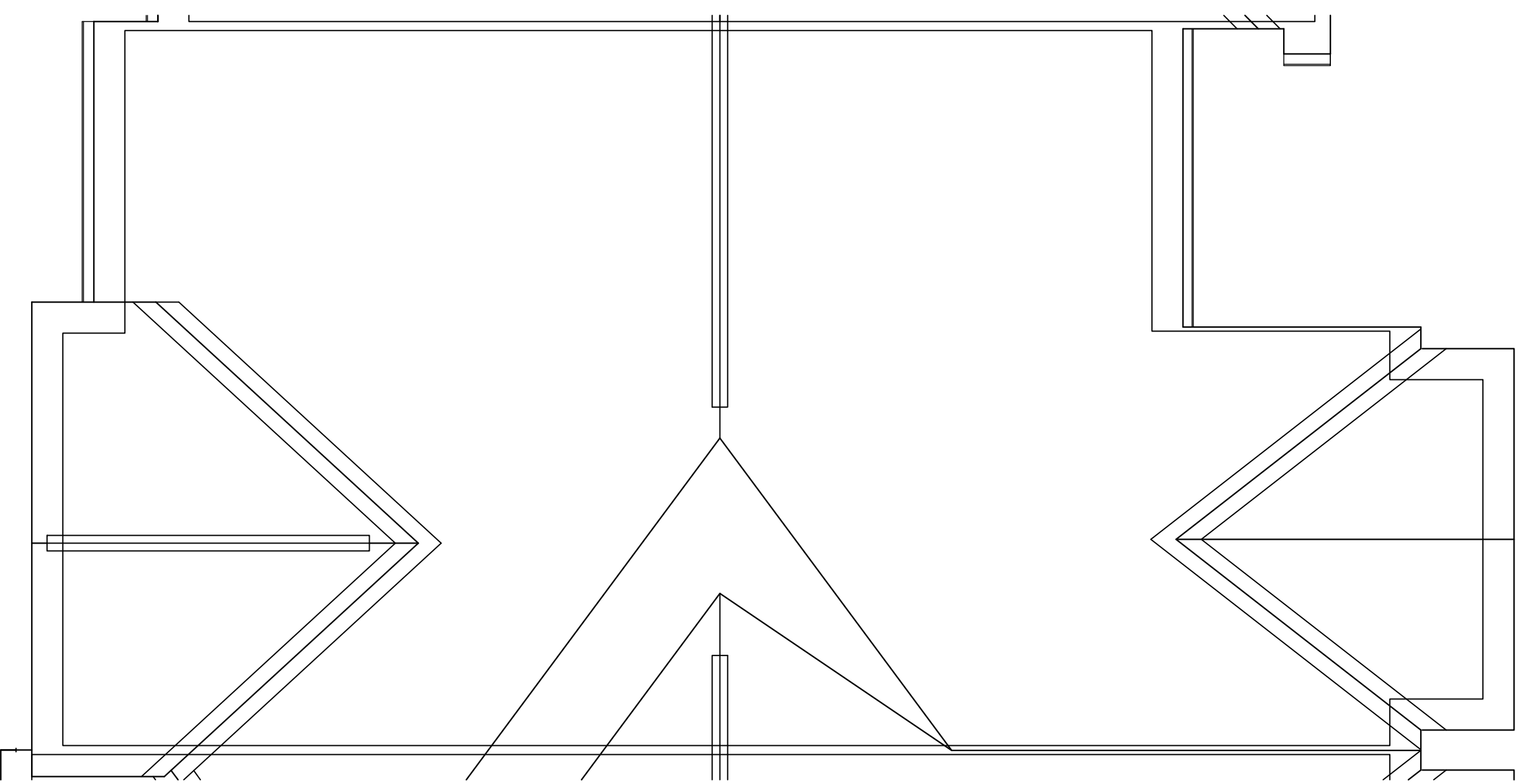
PROJECT:
 Building 'F'
 Lighthouse Point Condominiums
 Schooner Way
 Plymouth, Massachusetts

DWG. TITLE:
 BLDG 'F' - UNIT 1R
 SECOND FLOOR AND
 ROOF PLAN

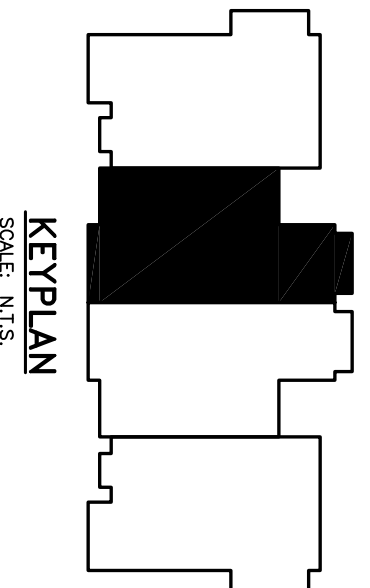
DRAWN: KEYPAN
 APPR: KEYPAN
 DATE: 10/27/15
 SCALE: AS SHOWN
 CAD FILE: A:\WORK\BLDG\UNIT\CONSTRUCTION\BUILDING F
 JOB NO.: 15-034
 SHEET: A2.4



1 SECOND FLOOR PLAN - UNIT #1R
 SCALE: 1/4" = 1'-0"
 A2.4
 SQUARE FOOTAGE
 SECOND FLOOR = 923 SQ.FT.



2 ROOF PLAN - UNIT #1R
 SCALE: 1/4" = 1'-0"
 A2.4
 SQUARE FOOTAGE
 TOTAL LIVING SPACE = 2,337 SQ.FT.



Copyright 2015 by Cramer Levine & Company, Architects, P.C. The architectural plans, drawings, designs, specifications and other arrangements on this sheet are and shall remain the property of Cramer Levine & Company, Architects, P.C. No part thereof shall be copied, disclosed to others, or used in connection with any work or project, other than the specified project for which they have been prepared and developed, without the express knowledge and written consent of Cramer Levine & Company, Architects, P.C.

NO.	REVISIONS	DATE
1	FOR PANEL APPROVAL	5/20/16
2	REVISED PER D'ANGELO	6/6/16
3	REVISED PER D'ANGELO	6/22/16
4	ISSUED FOR CONSTRUCTION	8/24/16
5	ISSUED FOR CONSTRUCTION	11/8/16
6	REVISIONS	12/14/16

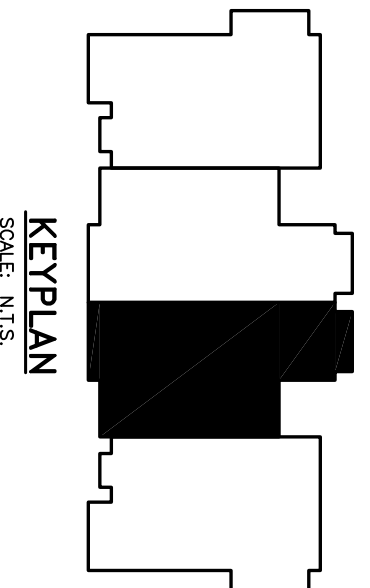
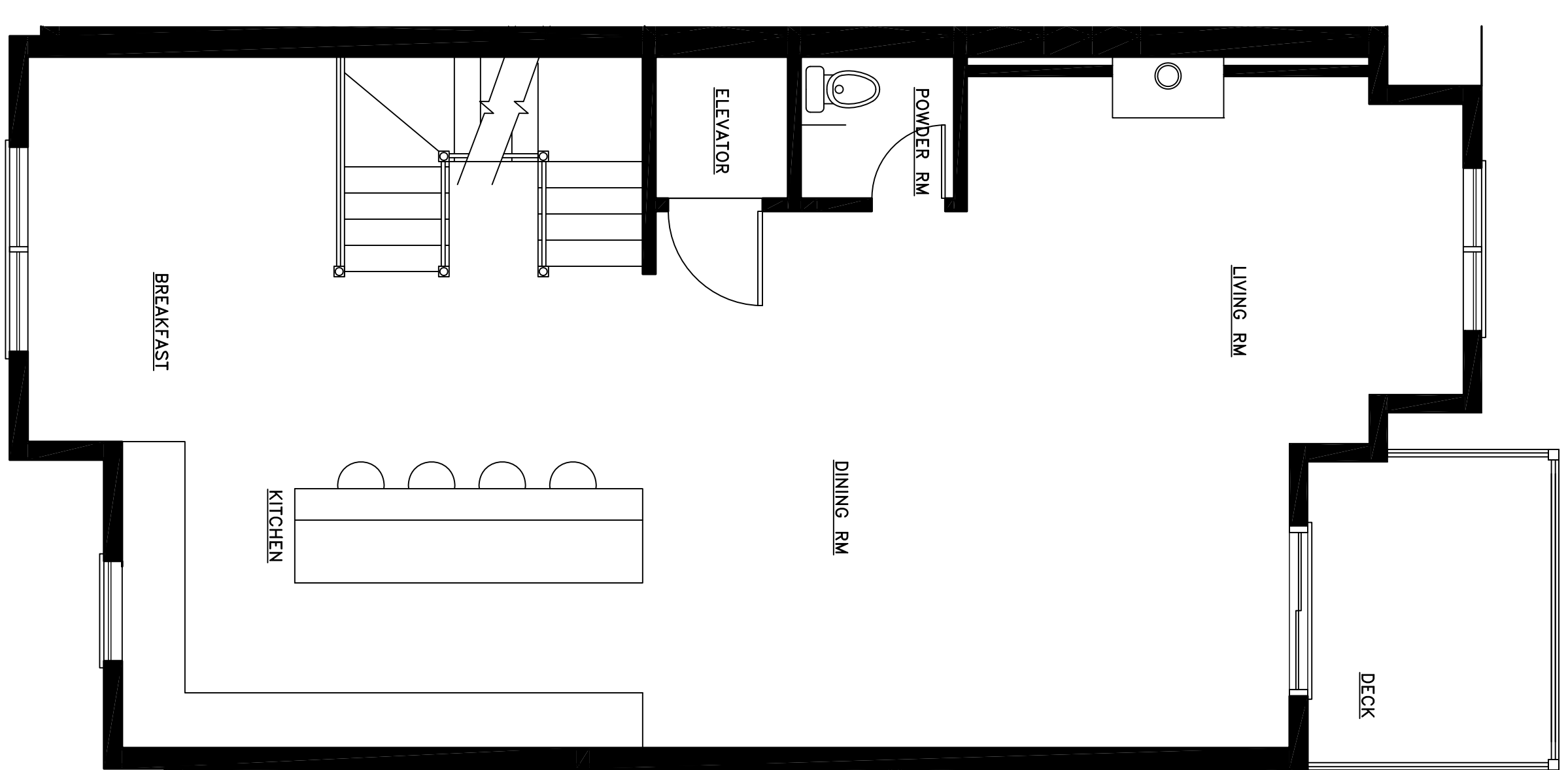
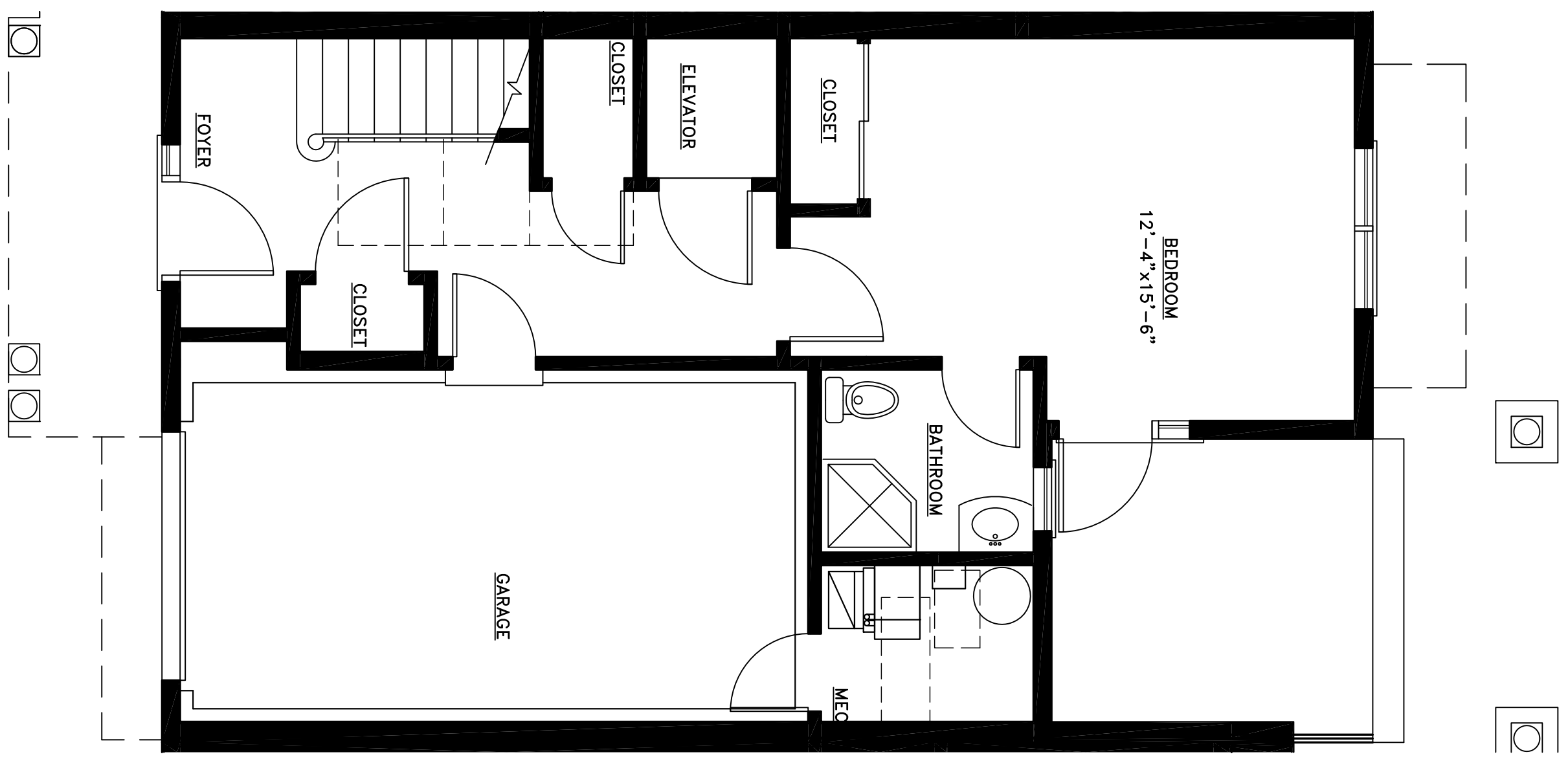
CRAMER ■ LEVINE
 & C O M P A N Y
 134 EAST MAIN STREET NORTON, MA 02766
 TEL (508) 230-2466 FAX (774) 265-1811

PROJECT:
Building 'F'
 Lighthouse Point Condominiums
 Schooner Way
 Plymouth, Massachusetts

DWG. TITLE:
BLDG 'F' - UNIT 1
GROUND FLOOR AND
FIRST FLOOR PLANS

DRAWN: []
 APPR: []
 DATE: 10/27/15
 SCALE: AS SHOWN
 CAD FILE: []
 SHEET: []
 JOB NO. 15-034

A2.5



Copyright 2015 by Cramer Levine & Company, Architects, P.C. The architectural plans, drawings, designs, specifications and other arrangements on this sheet are and shall remain the property of Cramer Levine & Company, Architects, P.C. No part thereof shall be copied, disclosed to others, or used in connection with any work or project, other than the specified project for which they have been prepared and developed, without the express knowledge and written consent of Cramer Levine & Company, Architects, P.C.

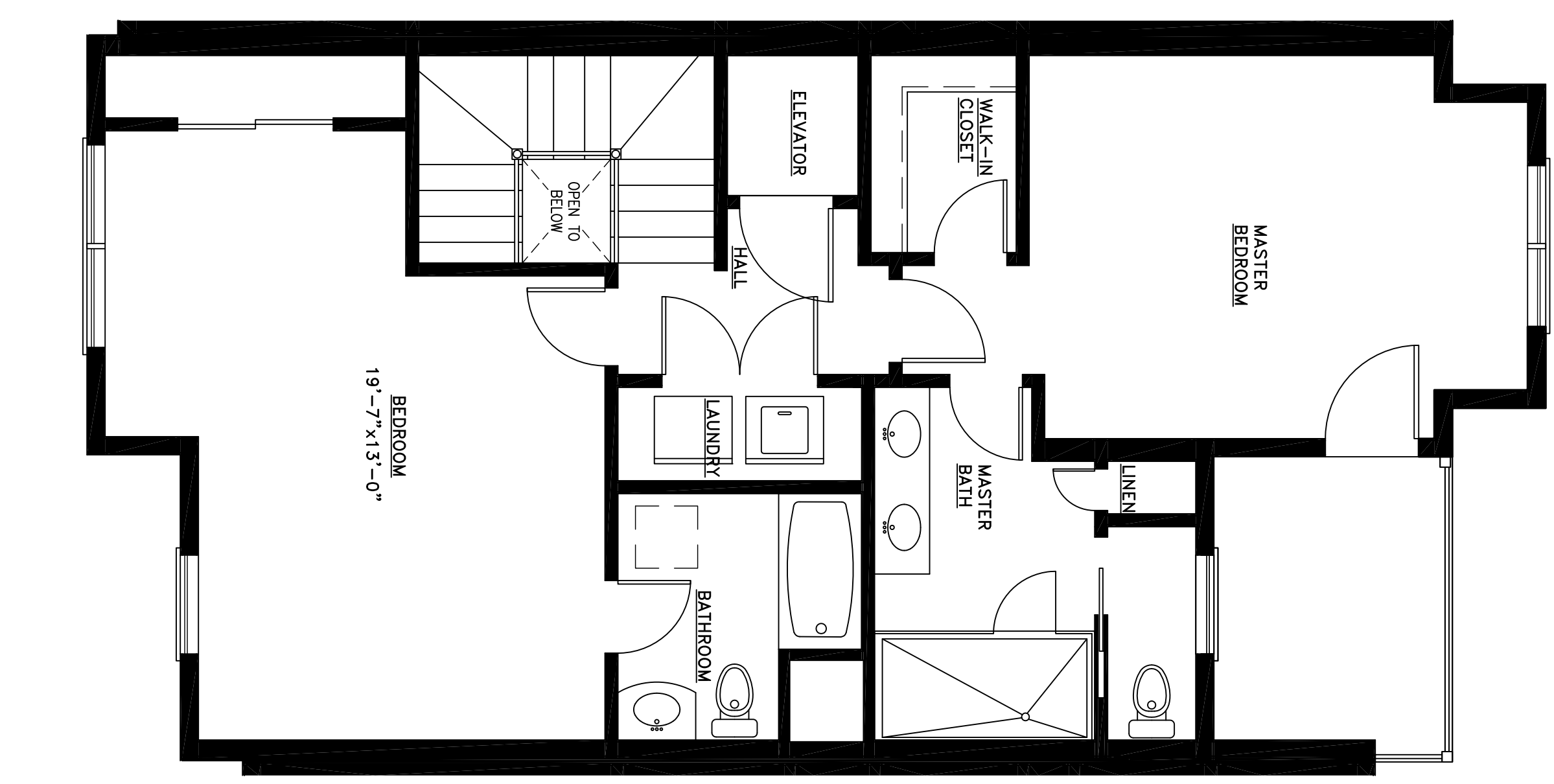
NO.	REVISIONS	DATE
1	FOR D'ANGELO REALTY APPROVAL	5/20/16
2	REVISION D'ANGELO	6/6/16
3	REVISION PER D'ANGELO	6/22/16
4	ISSUED FOR CONSTRUCTION	8/24/16
5	ISSUED FOR CONSTRUCTION	11/8/16
6	REVISIONS	12/14/16

CRAMER ■ LEVINE
 & C O M P A N Y
 134 EAST MAIN STREET NORTON, MA 02766
 TEL (508) 230-2466 FAX (774) 265-1811

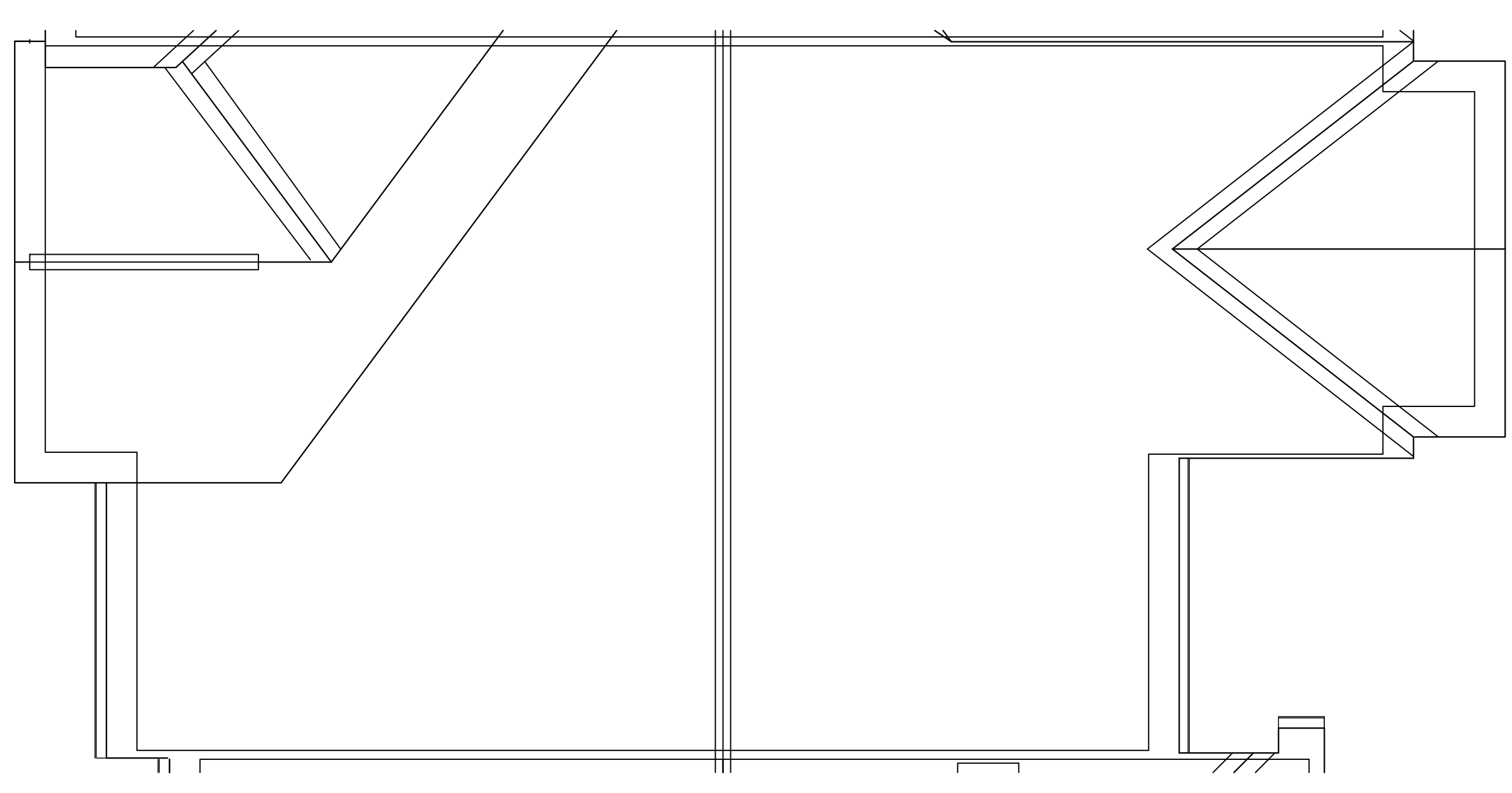
PROJECT:
 Building 'F'
 Lighthouse Point Condominiums
 Schooner Way
 Plymouth, Massachusetts

DWG. TITLE:
 BLDG 'F' - UNIT 1
 SECOND FLOOR AND
 ROOF PLAN

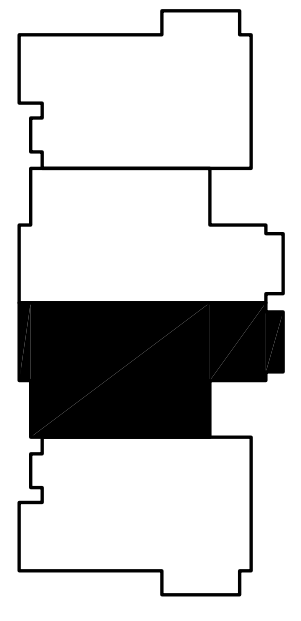
DRAWN:
 APPR:
 DATE: 10/27/15
 SCALE: AS SHOWN
 CAD FILE: \Users\delm\My Documents\Open Buildings 1
 JOB NO.: 15-034
 SHEET:
A2.6



1 SECOND FLOOR PLAN - UNIT #1
 SCALE: 1/8" = 1'-0"
 SQUARE FOOTAGE
 SECOND FLOOR = 936 SQ.FT.



2 ROOF PLAN - UNIT #1
 SCALE: 1/4" = 1'-0"
 SQUARE FOOTAGE
 TOTAL LIVING SPACE = 2,363 SQ.FT.



NO.	REVISIONS	DATE
1	FOR PANGILO REALTY APPROVAL	5/20/16
2	REVISION PER D'ANGELO	6/6/16
3	REVISION PER D'ANGELO	6/22/16
4	ISSUED FOR CONSTRUCTION	8/24/16
5	ISSUED FOR CONSTRUCTION	11/8/16
6	REVISIONS	12/14/16

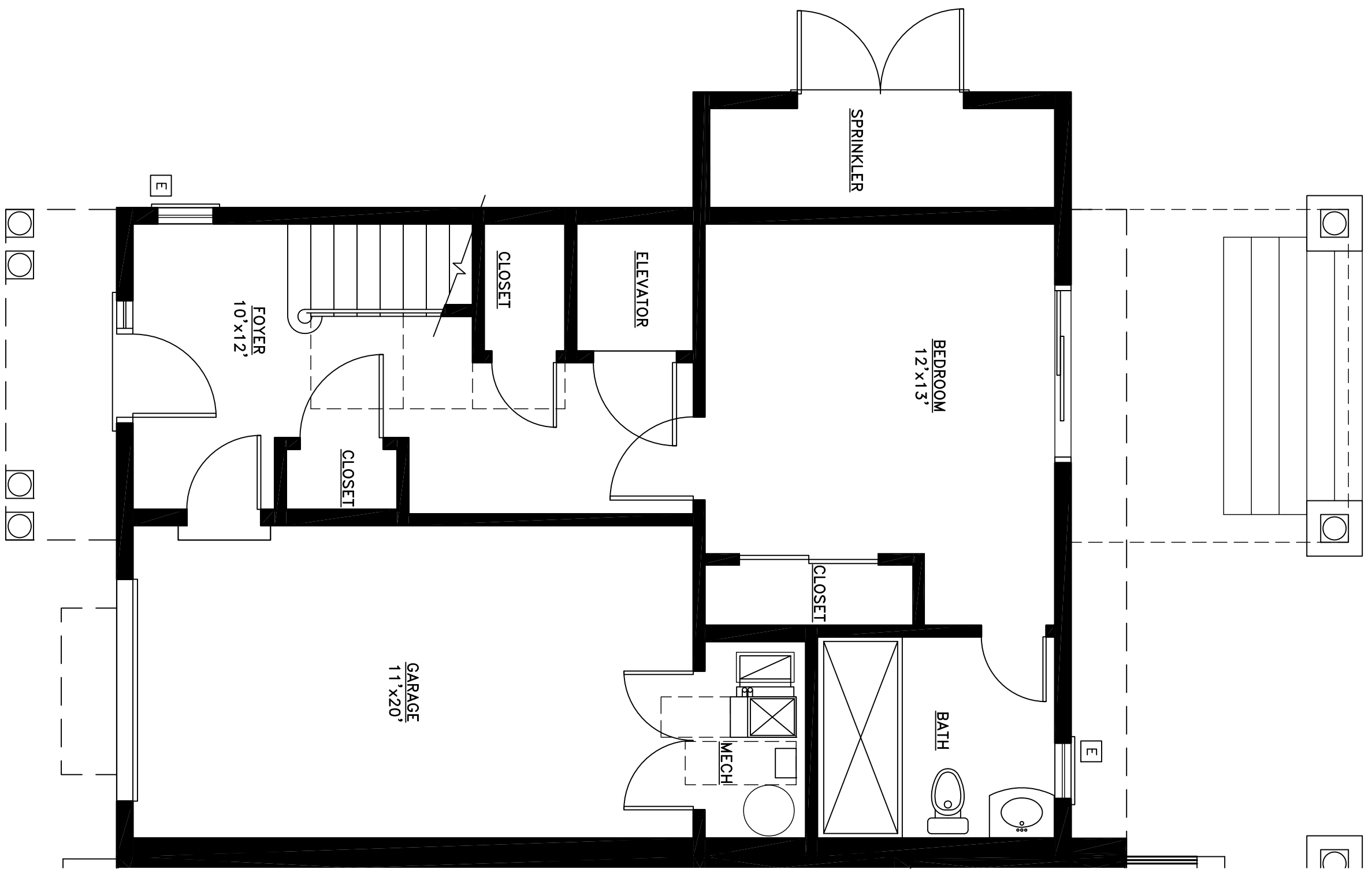
CRAMER ■ LEVINE
 & C O M P A N Y
 134 EAST MAIN STREET NORTON, MA 02766
 TEL (508) 230-2466 FAX (774) 265-1811

PROJECT:
Building 'F'
 Lighthouse Point Condominiums
 Schooner Way
 Plymouth, Massachusetts

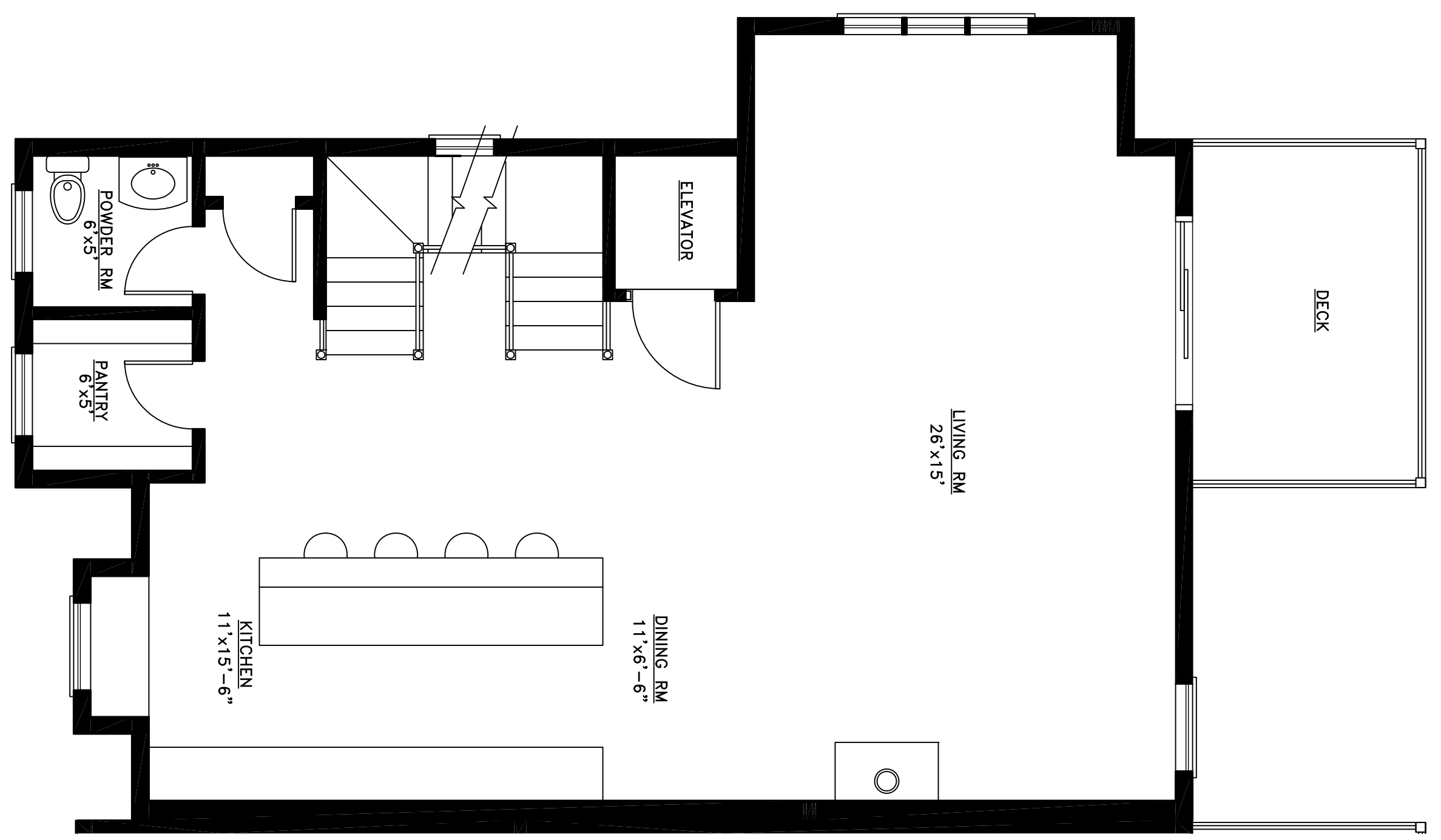
DWG. TITLE:
BLDG 'F' – UNIT TYPE 2R
GROUND FLOOR AND
FIRST FLOOR PLANS

DRAWN: []
 APPR: []
 DATE: 10/27/15
 SCALE: AS SHOWN
 CAD FILE: []
 15 WASHINGTON AVENUE, NORTON, MASSACHUSETTS 02766
 JOB NO. 15-034
 SHEET: []

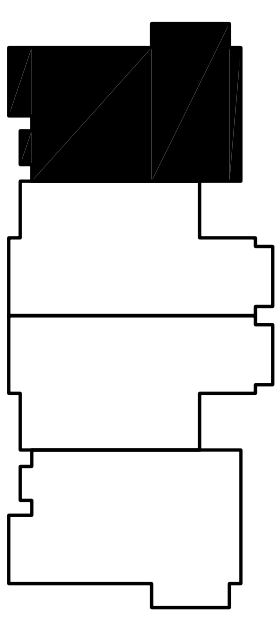
A2.7



1 GROUND FLOOR PLAN – UNIT #801
 SCALE: 1/4" = 1'-0"
 SQUARE FOOTAGE:
 GROUND FLOOR = 508 SQ.FT.
 GARAGE/MECH = 287 SQ.FT.



2 FIRST FLOOR PLAN – UNIT #801
 SCALE: 1/4" = 1'-0"
 SQUARE FOOTAGE:
 FIRST FLOOR = 957 SQ.FT.



NO.	REVISIONS	DATE
1	FOR PANGLO REALTY APPROVAL	5/20/16
2	REVISION PER D'ANGELO	6/6/16
3	REVISION PER D'ANGELO	6/22/16
4	ISSUED FOR CONSTRUCTION	8/24/16
5	ISSUED FOR CONSTRUCTION	11/8/16
6	REVISIONS	12/14/16

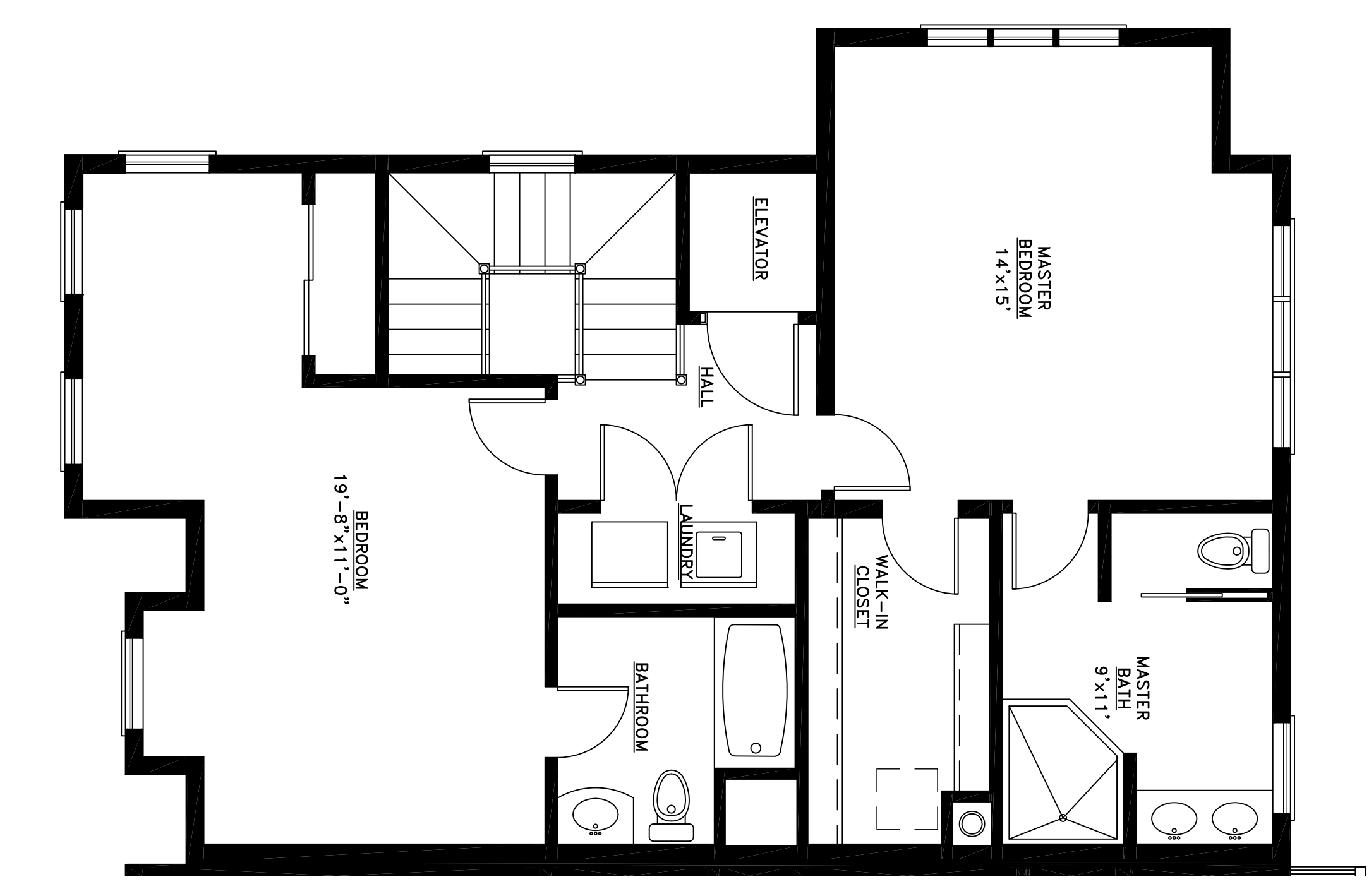
CRAMER ■ LEVINE
 & C O M P A N Y
 134 EAST MAIN STREET NORTON, MA 02766
 TEL (508) 230-2466 FAX (774) 265-1811

PROJECT:
 Building 'F'
 Lighthouse Point Condominiums
 Schooner Way
 Plymouth, Massachusetts

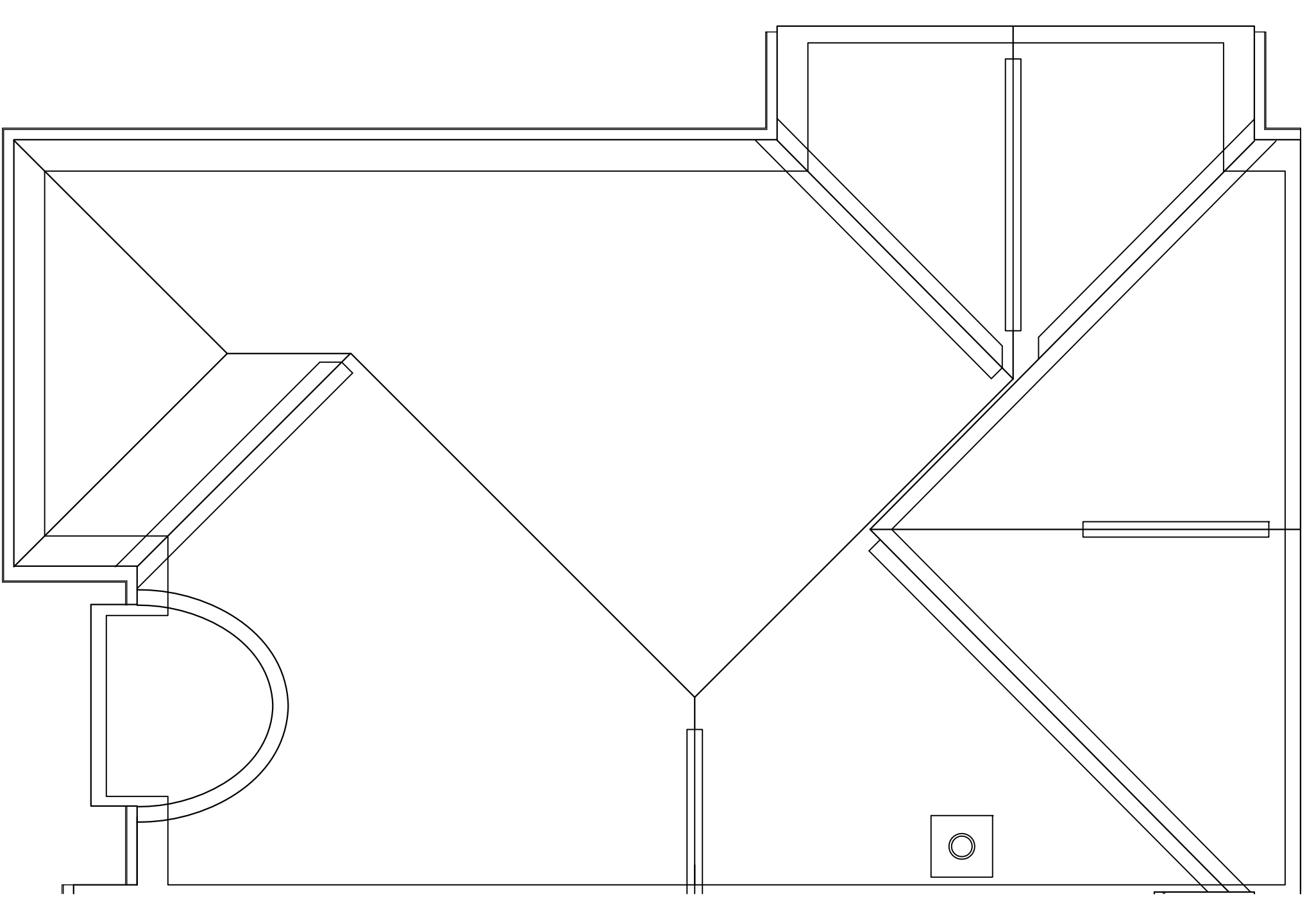
DWG. TITLE:
 BUILDING 'F' - UNIT 2R
 SECOND FLOOR AND
 ROOF PLAN

DRAWN
 APPR.
 DATE 10/27/15
 SCALE AS SHOWN
 CAD FILE
 15-034-01.dwg
 JOB NO. 15-034
 SHEET

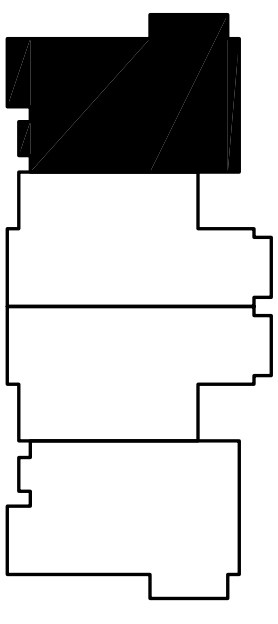
A2.8



1 SECOND FLOOR PLAN - UNIT #801
 SCALE: 1/4" = 1'-0"
 SQUARE FOOTAGE
 SECOND FLOOR = 957 SQ. FT.



2 ROOF PLAN - UNIT #801
 SCALE: 1/4" = 1'-0"
 SQUARE FOOTAGE
 TOTAL LIVING = 2422 SQ. FT.



KEYPLAN
 SCALE: N.T.S.

Copyright 2015 by Cramer Levine & Company, Architects, P.C. The architectural plans, drawings, designs, specifications and other arrangements on this sheet are and shall remain the property of Cramer Levine & Company, Architects, P.C. No part thereof shall be copied, disclosed to others, or used in connection with any work or project, other than the specified project for which they have been prepared and developed, without the express knowledge and written consent of Cramer Levine & Company, Architects, P.C.