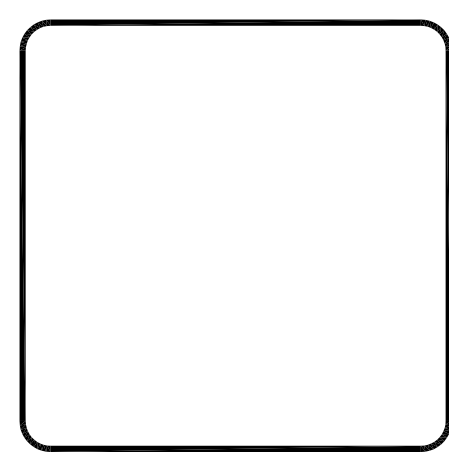


NO.	REVISIONS	DATE
1	GENERAL REVISION	8/11/11

**CRAMER & LEVINE**  
 ARCHITECTS  
 124 MASS MAIN STREET  
 NORFOLK, MA 01901  
 TEL (508) 230-2488  
 FAX (774) 269-1811



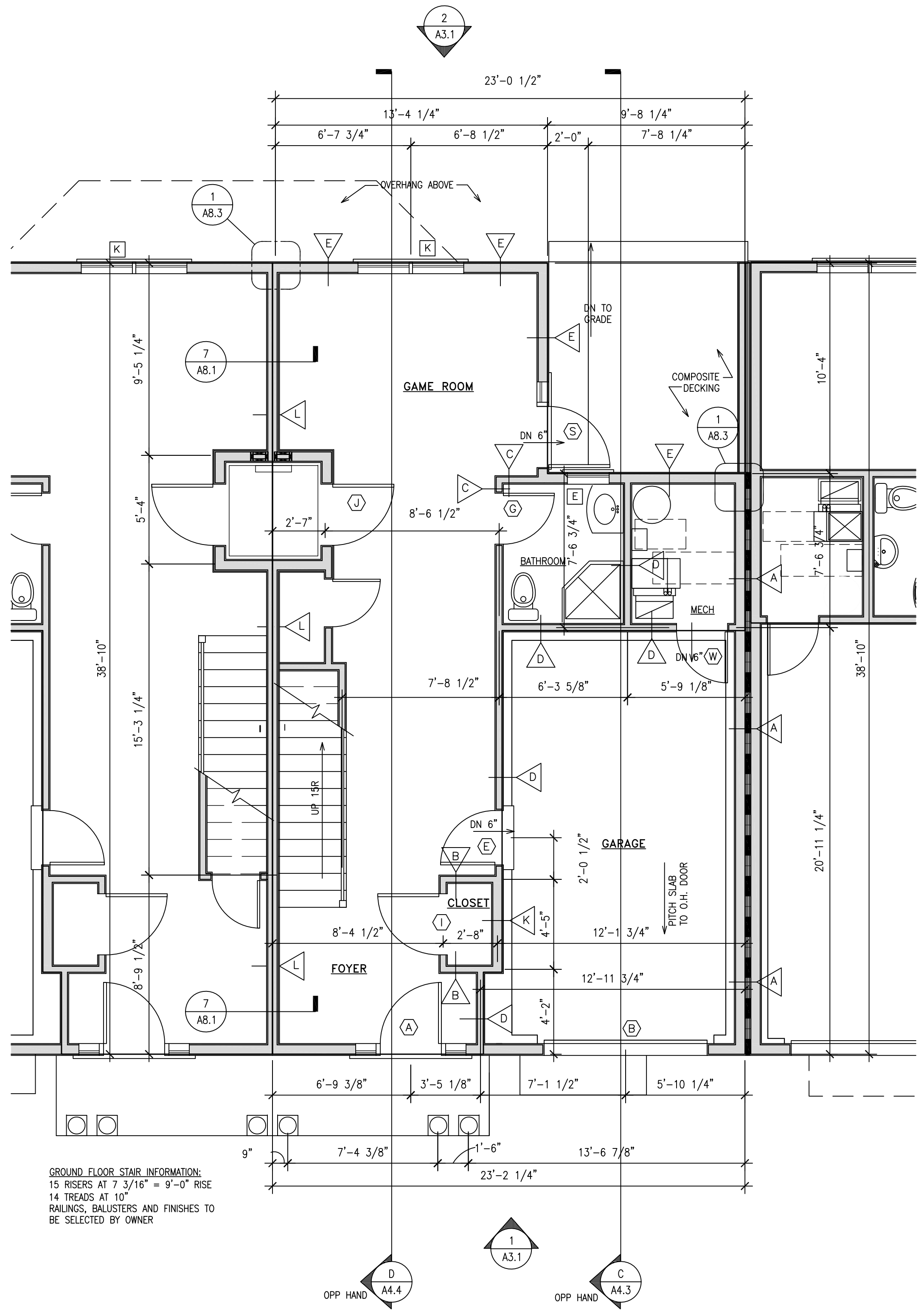
**Building 'G'**  
 Lighthouse Point Condominiums  
 Schooner Way  
 Plymouth, Massachusetts

**BLDG 'G' - UNIT 8**  
**GROUND FLOOR AND**  
**FIRST FLOOR PLANS**

DRAWN	PO
APPR.	
DATE	2/09/09
SCALE	AS SHOWN
CAD FILE	H:\DRAWINGS\GROUP\HARBORSHORES
JOB NO.	11-032
SHEET	

**A2.3**

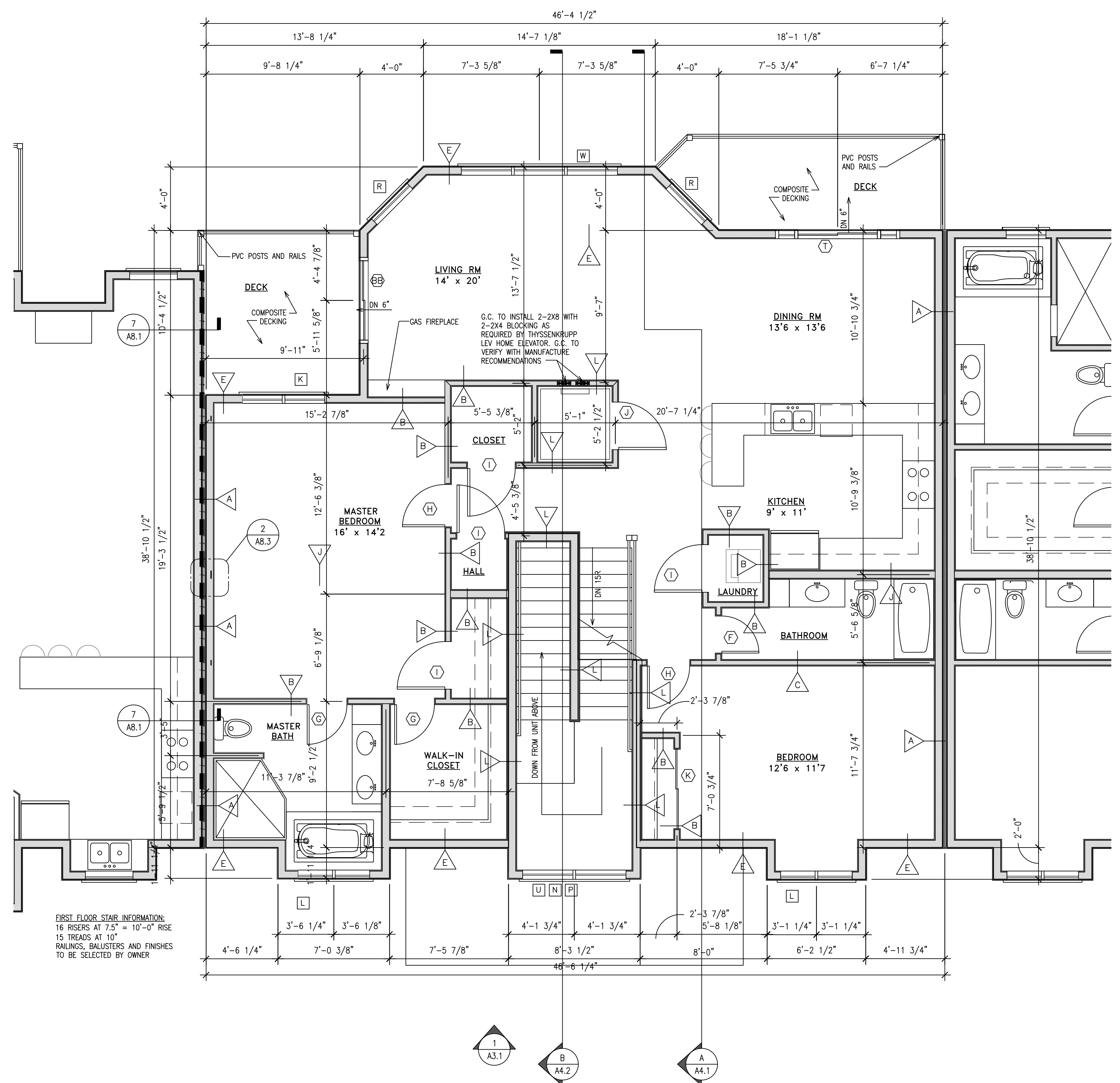
Copyright © 2011 by Cramer Levine & Company, Architects, P.C. The architectural plans, drawings, designs, specifications and other arrangements on this sheet are and shall remain the property of Cramer Levine & Company, Architects, P.C. No part thereof shall be copied, disclosed to others, or used in connection with any work or project, other than the specified project for which they have been prepared and developed, without the express written consent of Cramer Levine & Company, Architects, P.C.



**GROUND FLOOR STAIR INFORMATION:**  
 15 RISERS AT 7 3/16" = 9'-0" RISE  
 14 TREADS AT 10"  
 RAILINGS, BALUSTERS AND FINISHES TO BE SELECTED BY OWNER

**A2.3 GROUND FLOOR PLAN - UNIT #8**  
 SCALE: 1/4" = 1'-0"

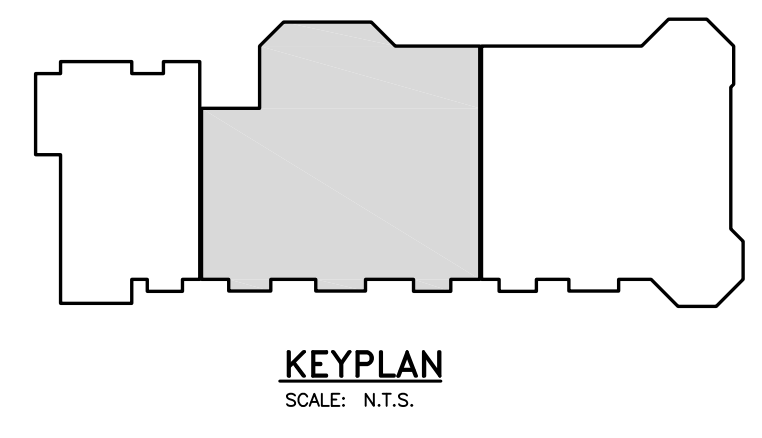
**SQUARE FOOTAGE**  
 FIRST FLOOR = 549 SQ.FT.  
 GARAGE/MECH = 304 SQ.FT.



**FIRST FLOOR STAIR INFORMATION:**  
 16 RISERS AT 7 5/8" = 10'-0" RISE  
 15 TREADS AT 10"  
 RAILINGS, BALUSTERS AND FINISHES TO BE SELECTED BY OWNER

**A2.3 FIRST FLOOR PLAN - UNIT #8**  
 SCALE: 1/4" = 1'-0"

**SQUARE FOOTAGE**  
 FIRST FLOOR = 1,673 SQ.FT.  
 TOTAL LIVING SPACE = 2,222 SQ.FT.



**KEYPLAN**  
 SCALE: N.T.S.