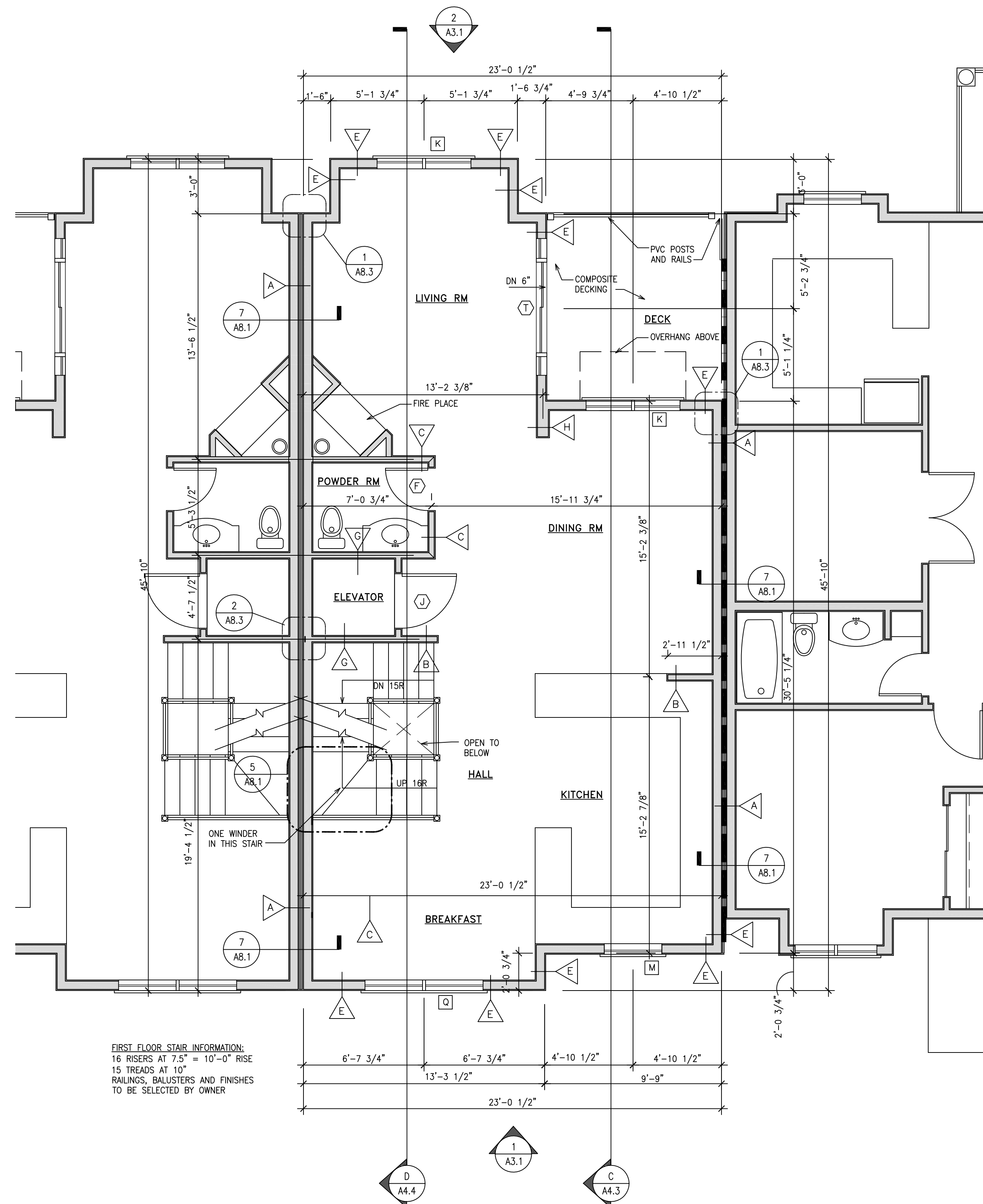


GROUND FLOOR STAIR INFORMATION:
 15 RISERS AT 7 3/16" = 9'-0" RISE
 14 TREADS AT 10"
 RAILINGS, BALUSTERS AND FINISHES
 TO BE SELECTED BY OWNER

1 GROUND FLOOR PLAN - UNIT #1
A2.5 SCALE: 1/8" = 1'-0"

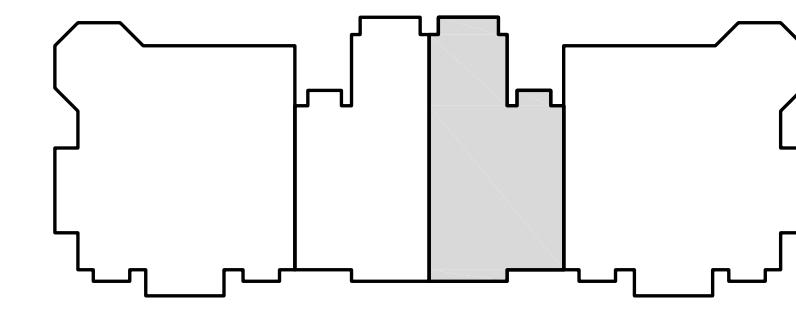
SQUARE FOOTAGE
 GROUND FLOOR = 491 SQ.FT.
 GARAGE/MECH = 304 SQ.FT.



FIRST FLOOR STAIR INFORMATION:
 16 RISERS AT 7.5" = 10'-0" RISE
 15 TREADS AT 10"
 RAILINGS, BALUSTERS AND FINISHES
 TO BE SELECTED BY OWNER

2 FIRST FLOOR PLAN - UNIT #1
A2.5 SCALE: 1/8" = 1'-0"

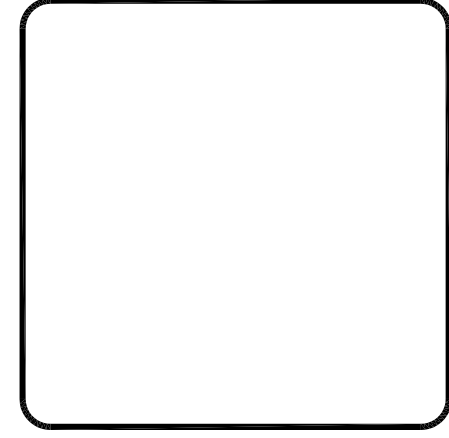
SQUARE FOOTAGE
 FIRST FLOOR = 897 SQ.FT.



KEYPLAN
 SCALE: N.T.S.

NO.	REVISIONS	DATE
	STAIR CONFIGURATION & SOUND ATTENUATION	6/21/13

CRAMER & LEVINE
 ARCHITECTS
 124 MASS MAIN STREET
 NORFOLK, MA 01901
 TEL: (508) 230-2488 FAX: (774) 260-1811



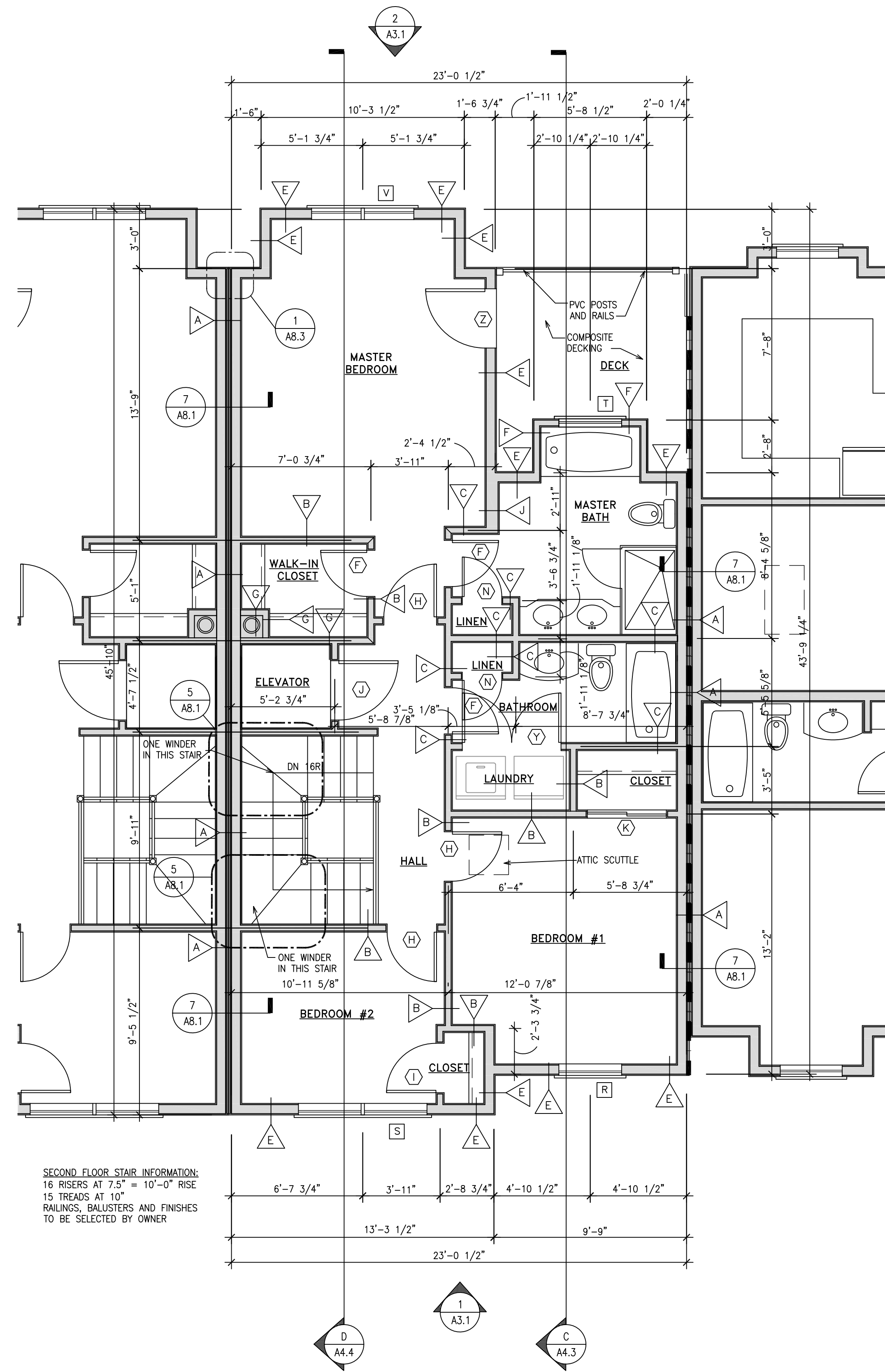
PROJECT:
Building 'A'
Lighthouse Point Condominiums
Schooner Way
Plymouth, Massachusetts

DWG. TITLE:
BLDG 'A' - UNIT 1
GROUND FLOOR AND
FIRST FLOOR PLANS

DRAWN	PO
APPR.	
DATE	5/21/13
SCALE	AS SHOWN
CAD FILE	M:\DRAWINGS\GROUP\HARBORSHORES
JOB NO.	13-034
SHEET	

A2.5

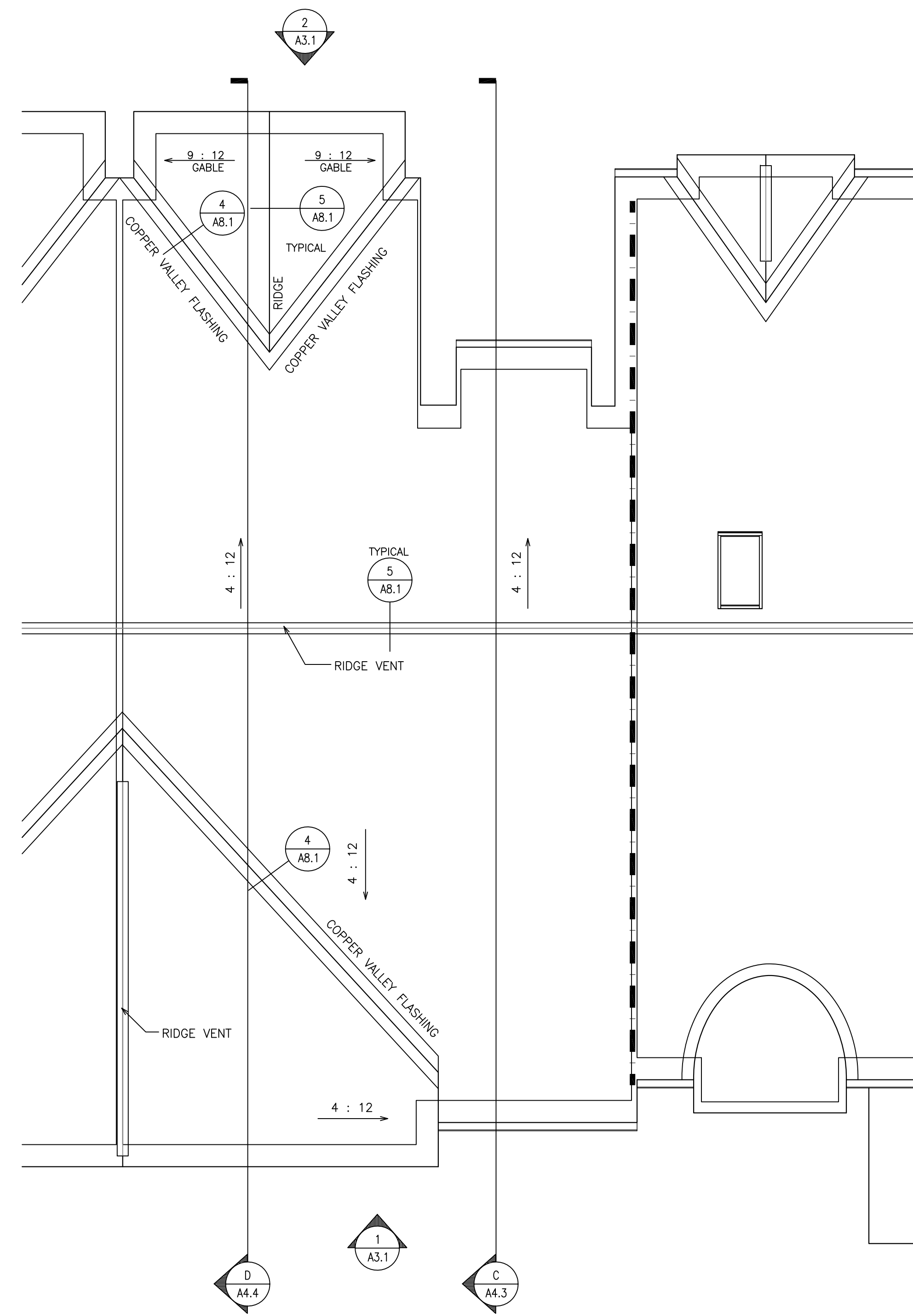
Copyright © 2013 by Cramer Levine & Company, Architects, P.C. The architectural plans, drawings, designs, specifications and other arrangements on this sheet are and shall remain the property of Cramer Levine & Company, Architects, P.C. No part thereof shall be copied, disclosed to others, or used in connection with any work or project, other than the specified project for which they have been prepared and designed, without the express written consent of Cramer Levine & Company, Architects, P.C.



SECOND FLOOR STAIR INFORMATION:
 16 RISERS AT 7.5" = 10'-0" RISE
 15 TREADS AT 10"
 RAILINGS, BALUSTERS AND FINISHES
 TO BE SELECTED BY OWNER

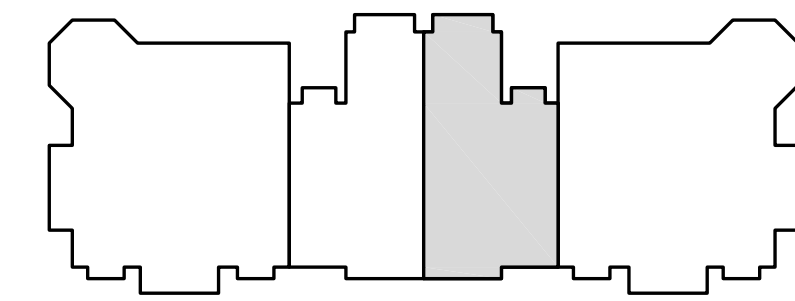
1
A2.6 SECOND FLOOR PLAN - UNIT #1
 SCALE: 1/8" = 1'-0"

SQUARE FOOTAGE
 SECOND FLOOR = 912 SQ.FT.



2
A2.6 ROOF PLAN - UNIT #1
 SCALE: 1/4" = 1'-0"

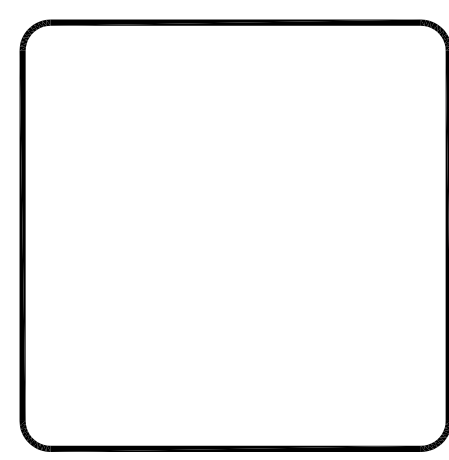
SQUARE FOOTAGE
 TOTAL LIVING SPACE = 2,300 SQ.FT.



KEYPLAN
 SCALE: N.T.S.

NO.	REVISIONS	DATE
	STAIR CONFIGURATION & SOUND ATTENUATION	6/21/13

CRAMER & LEVINE
 ARCHITECTS
 124 MASS MAIN STREET
 NORFOLK, MA 01901
 TEL: (508) 230-2488 FAX: (774) 260-1811



PROJECT:
Building 'A'
Lighthouse Point Condominiums
Schooner Way
Plymouth, Massachusetts

DWG. TITLE:
BLDG 'A' - UNIT 1
SECOND FLOOR AND
ROOF PLAN

DRAWN	PO
APPR.	
DATE	5/21/13
SCALE	AS SHOWN
CAD FILE	H:\DRAWINGS\GROUP\HARBORSHORES\
JOB NO.	13-034
SHEET	

A2.6

Copyright © 2013 by Cramer & Levine, P.C. The architectural plans, drawings, designs, specifications and other arrangements on this sheet are and shall remain the property of Cramer & Levine, P.C. No part thereof shall be copied, disclosed to others, or used in connection with any work or project, other than the specified project for which they have been prepared and designed, without the express written consent of Cramer & Levine, P.C.